

Tri-Shutter Card

with U. S. measurements
from Robin's Craft Room



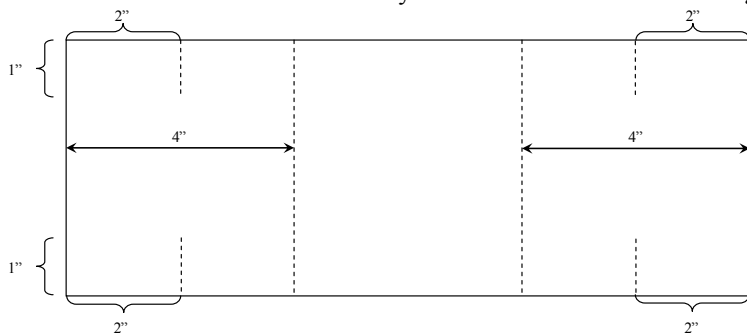
A big Hawaiian, "Mahalo," to fellow demonstrator, Sharon Field, who first showed me instructions for this card. I'm making this set of instructions because the only instructions I could find on the Internet had metric measurements, and my brain has a bit of trouble getting around the idea of centimeters!

Materials Needed:

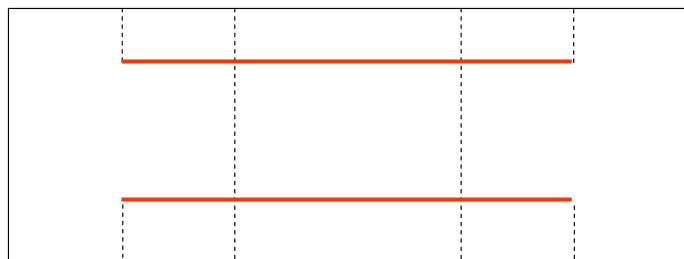
1 piece of 12" x 12" card stock, cut to 12" x 5-1/2"
Designer Paper, with 3 pieces cut 3-1/4" x 3-3/4" and 2 pieces cut 7/8" by 12"
Embellishments and stamp sets

Instructions:

1. Score the card stock as shown by the dotted lines in the following picture.



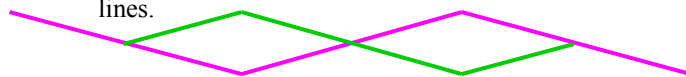
2. Using a Fiskars cutter, cut between the ends of the two small score lines as shown by the red lines.



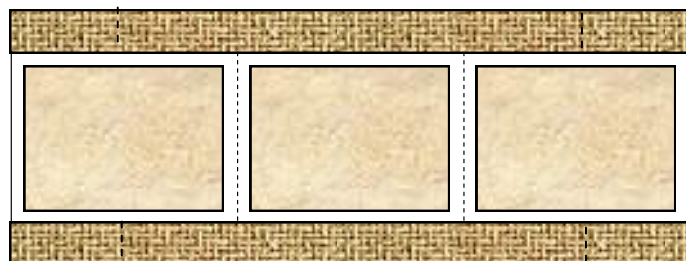
3. Make Mountain Folds (fold the paper away from you) on the score lines shown in Blue and Valley Folds (fold the paper towards you) on the score lines shown in Gold.



4. When you have finished folding, the main body of the card will be folded like the pink lines, below, and the top and bottom strips will be folded like the green lines.



5. Use the Designer Series Paper to decorate the top and bottom strips and the 3 main faces of the card. Embellish at will!



For the card in the photo above, I used Designer Paper from the **Simply Scrappin' Kit, "Sunshine Garden,"** embellished with Butterflies cut from the **Stampin' Up! exclusive Sizzix Die, Beautiful Butterflies.** The card stock is **Textured Baja Breeze.**