

My Digital Studio

by Stampin' Up!



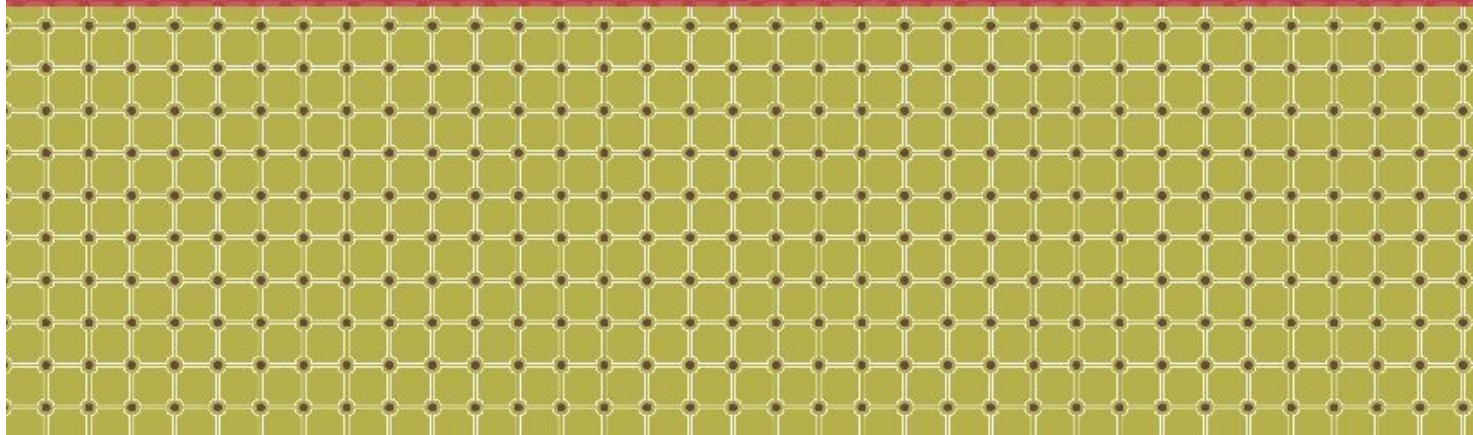
Working With Photo Boxes

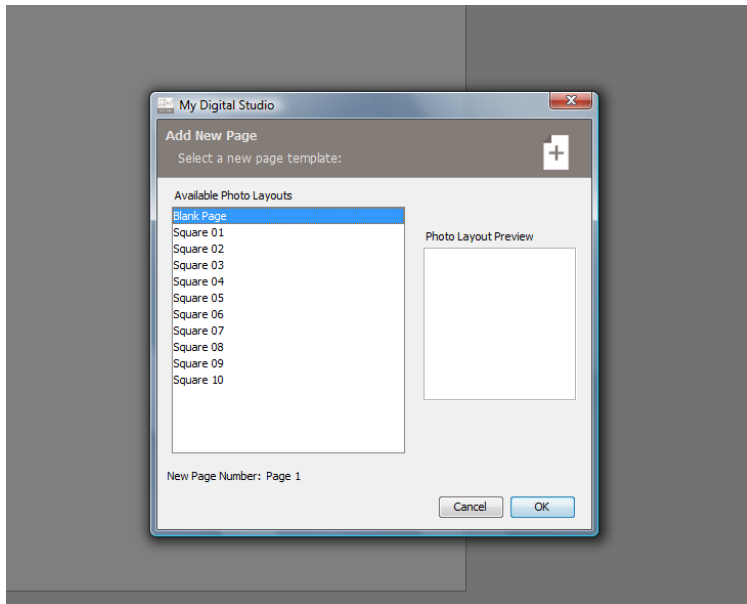


Part I

together

YOU AND ME; LONELY NO MORE. WITH ONE ANOTHER; INSEPARABLE.



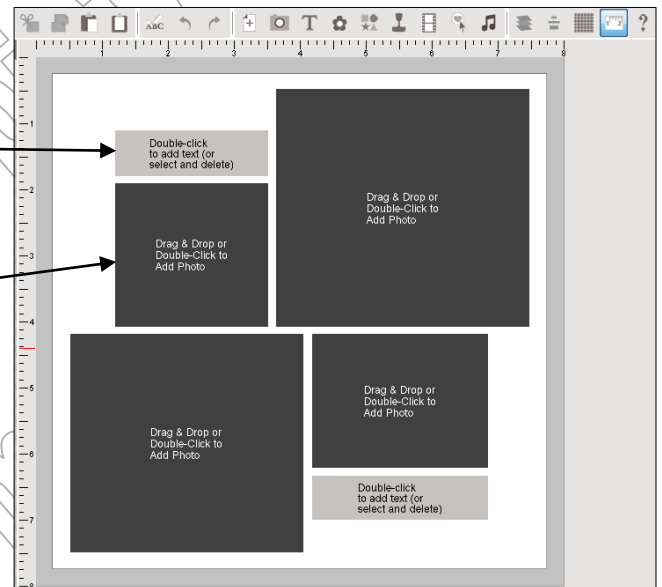


For this tutorial, I have chosen to start with a blank canvas. (Note that in later tutorials and in webinars, we will work with the other two options.)

I've chosen the second page layout for my first page. (In a future tutorial and webinar we will start with a blank page to demonstrate all the flexibility you have with MDS.)

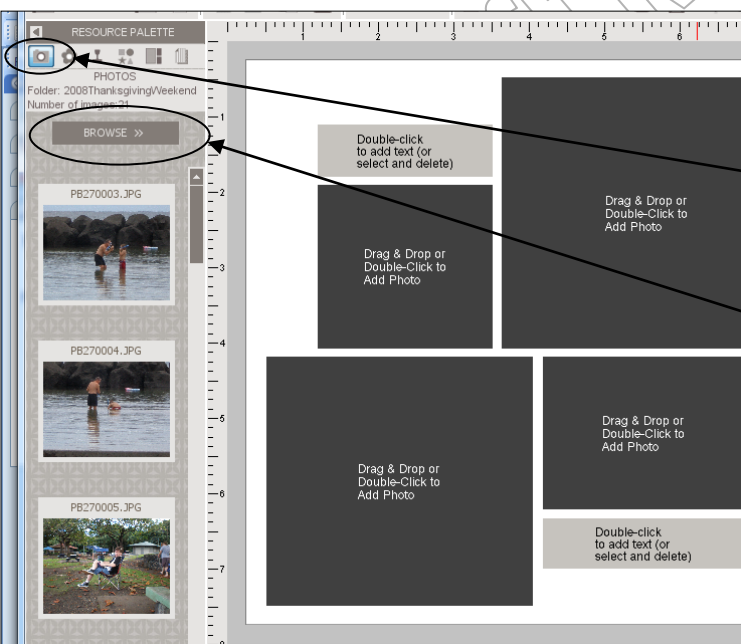
There are two different kinds of objects on this page layout:

Text Boxes
and
Photo Boxes



In this tutorial, we'll get these photo boxes filled with YOUR photos.

The first thing you are going to have to do at this point is figure out which photos you want in these boxes.

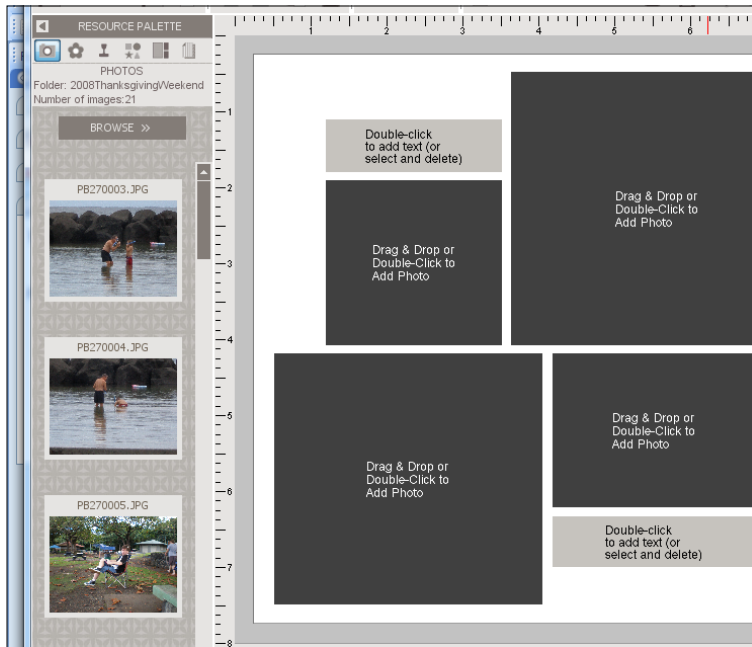


You will be able to choose any photos that are on your computer for your album by clicking the

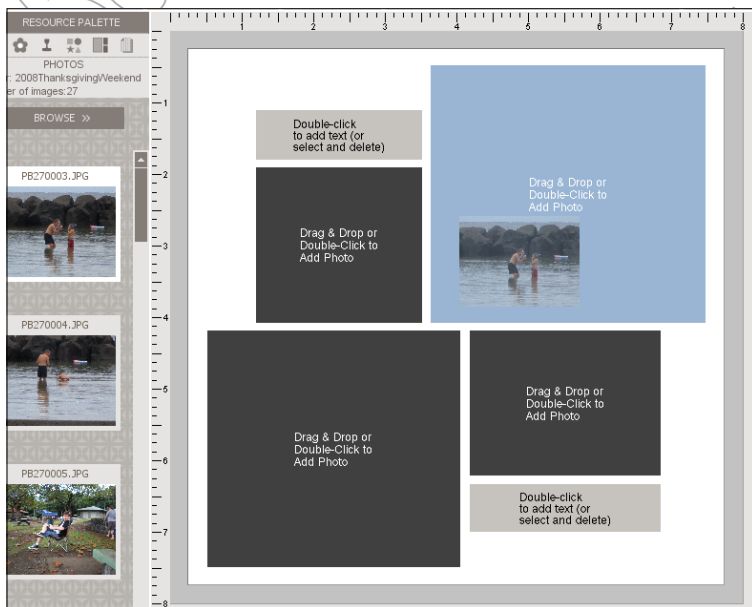
Photo Icon

then

the Browse button



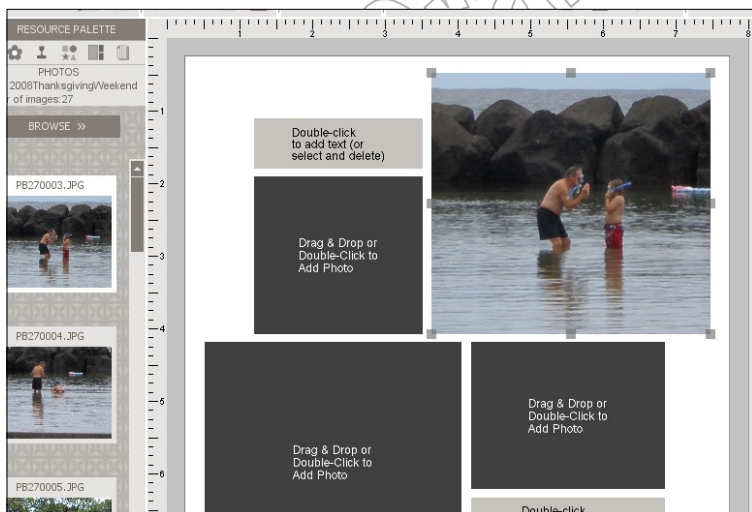
Once you've chosen a file with some photos, then you're just going to click a photo and drag it onto one of the Photo Boxes. *(Note that you are not limited just to one set of photos. If you only want one photo from this folder, that's fine! Just go browse and find another folder for other pictures!)*



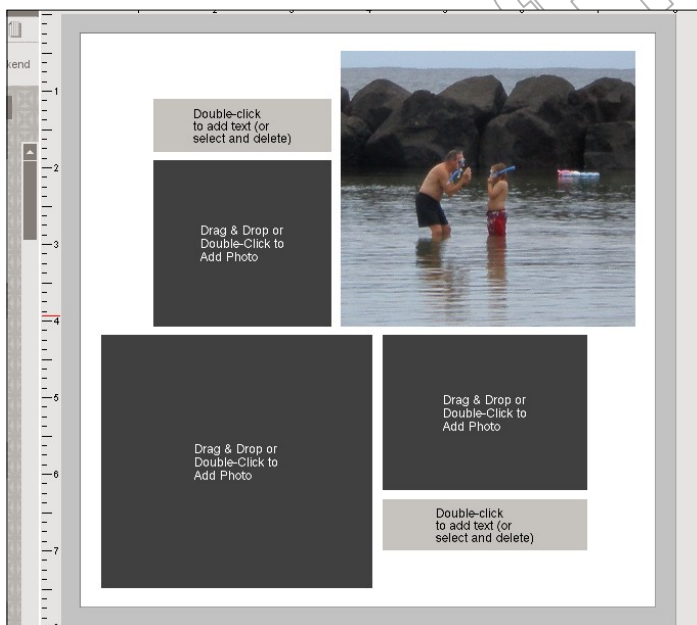
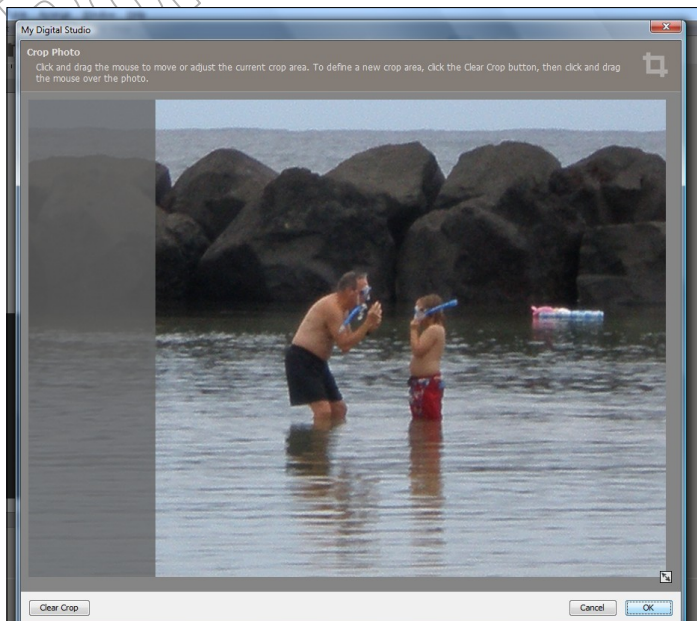
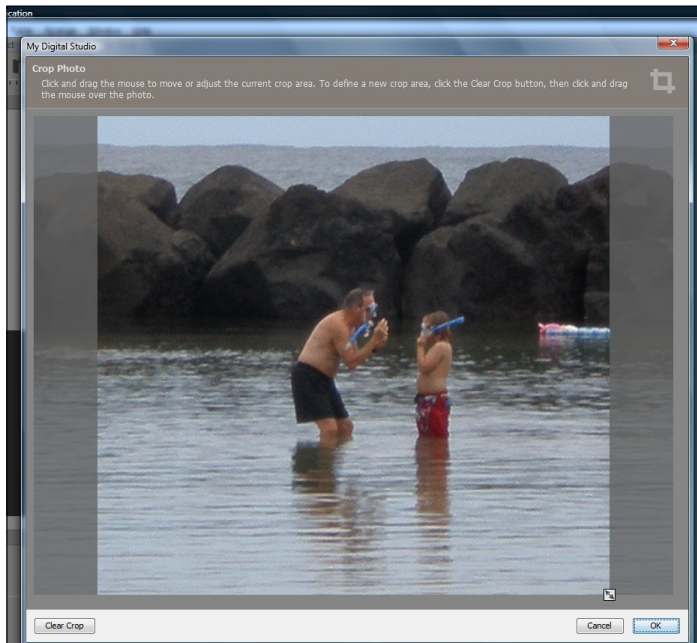
I'm going to choose that first photo to drag into the large box at the top right. What happens at this point is that the Photo Box that was black now changes to light blue. This shows you that the photo is going to be dropped into this box once you let go of your mouse clicker. You even see a shadow of the photo that's going to be dropped into this photo box.

Note that the photo does not have to be the same shape as the photo box. My Digital Studio will automatically determine what part of the photo will be displayed in the Photo Box.

BUT YOU CAN CHANGE THE DISPLAY AREA!



This shows how the chosen photo appears in the Photo Box.



You can change the way the picture fills the Photo Box by double-clicking on the photo once it's in the Photo Box.

Looking at the picture at the left, we can see that the brighter area shows what's appearing in the Photo Box. By clicking and dragging that brighter area across any part of the photo, you can change the area that will show in the photo box.

In this case, I'm going to move the photo area all the way over to the right to get the entire pink and blue float into the Photo Box.

I then click, "OK," and the Photo Box has changed.